

HEX BARBELL

This quality Olympic Hex Bar, or Trap Bar, keeps weight closer to your center of gravity when performing lifting movements such as squats, shrugs and dead lifts. This allows you to remain more upright which can reduce the chances for lower back injuries. Featuring dual knurled handles and a durable chrome finish, this bar will be a trusted addition to your weight room.

Features:

- Dual Knurled Handles
- 4-1/2" Handle Height Variations
- 10" Sleeve Length
- Durable Chrome Finish

Specifications:

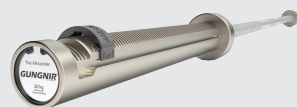
- Bar Diameter: 25 mm
- Weight: 50 lbs.
- 750 Weight Capacity
- Made in China



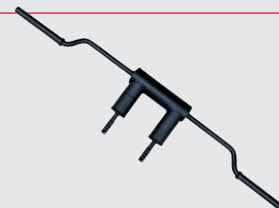
A complete
range of
barbells:

MORE STRENGTH
PER SQUARE FOOT™

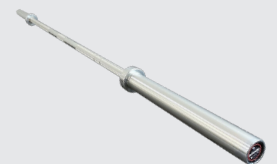
Where form meets
function to elevate your
lifting experience with
power and precision.



Gungnir Bar



Safety Squat Bar



Badger Bar