



# SINGLE BAR STORAGE (Frame Mount)

Transform your ordinary Titan or Titan Pro storage setup into a convenient bar storage solution with this vertical-mounted bar storage system.



**Features:**

- 1" Hardware
- Adjustable to Any Height on Titan Rig Uprights
- Designed to Hold any Olympic Barbell with a 2" Diameter Sleeve on Titan Uprights
- Long Lasting Powder Coat Finish
- Textured or Gloss Finish



**PICK YOUR COLORS!**  
Textured or gloss powder coated finish  
**COLOR-MATCHING ALSO AVAILABLE.**

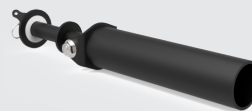
**More Rack & Rig Accessories & Attachments**

**MORE STRENGTH PER SQUARE FOOT™**

Maximize your Rack or Rig with many accessory & attachment options.



Single Leg Squat Roller



Landmine



Band Peg Accessories

409031

Titan Accessory

# SINGLE BAR STORAGE (frame mount)

**Specifications:**

**WEIGHT:** 5.92 LBS

**DIMENSIONS:** 3" W x 7.5" H x 5.43" L

