

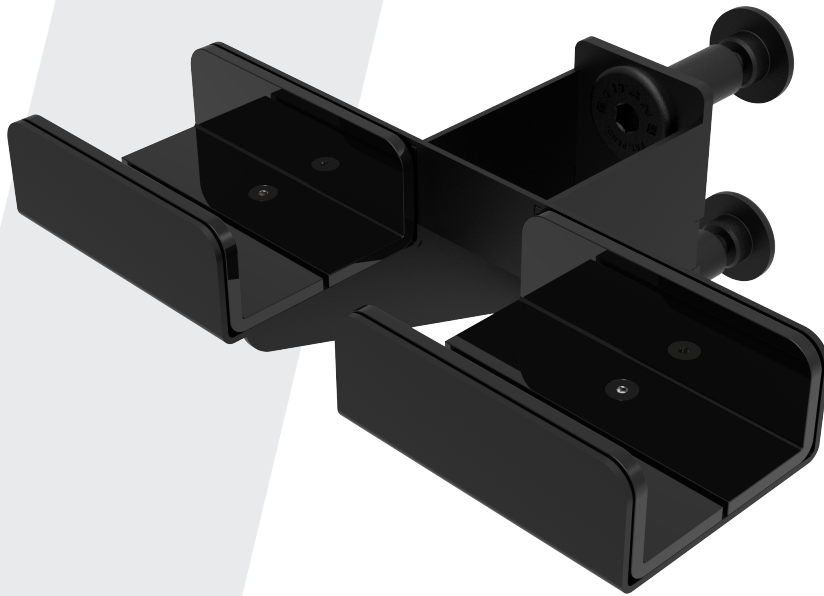


# Ultra Pro™ Attachment DIP STORAGE

This rack mounted dip storage solution mounts to 3" tubing with Titan Mating Bolts. The perfect storage solution for the dip station when not in use, keeping it out of the way and secure until next use.

## Features:

- UHMW Wear Guards
- Titan Mating Bolts To Secure To Upright
- Intensive Multi-Stage Pretreatment Process For Long-Lasting Powder-Coat Finish
- Textured Or Gloss Powder Coated Finish Available
- Custom Color-Matching Options Available



**PICK YOUR COLORS!**  
Textured or gloss powder coated finish  
**COLOR-MATCHING ALSO AVAILABLE.**

**A full line of add-on equipment:**

**MORE STRENGTH PER SQUARE FOOT™**

Maximize your Rack or Rig performance with many accessory & attachment options.



Bolt-on Band Pegs



Split Squat Roller



Band Peg Accessories

709137

# Ultra Pro™ Attachment DIP STORAGE

## Specifications:

**COMPONENTS:** Heavy Duty Steel Construction  
1/4" Mounting Plate  
11-Gauge Formed Steel Frame

**WEIGHT:** 8.67 LBS

**DIMENSIONS:** 8.74" W x 6" H x 14.25" L

