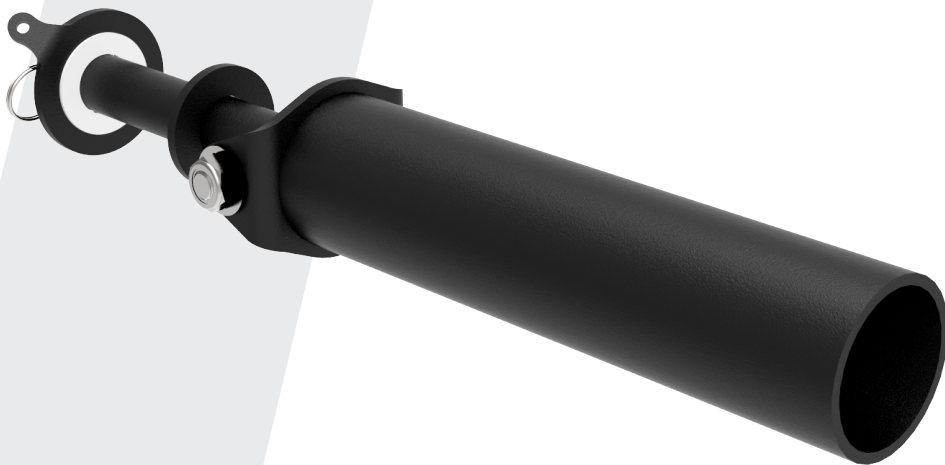


Titan Attachment LANDMINE

This Single Landmine Receptacle accepts Standard 2" Olympic Barbell ends and allows for movement in one direction, and 360° Rotation within the post. Compatible with Titan Series Uprights.

Features:

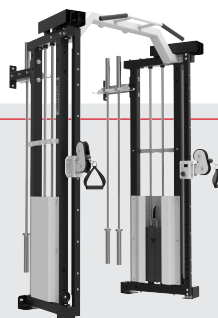
- Bronze Bushings
- UHMW Wear Guards
- 9-7/8" Sleeve Depth
- 1" Diameter Pin
- Quick Release Pin to Lock into Upright Frame
- Intensive Multi-Stage Pretreatment Process for Long-Lasting Powder-Coat Finish
- Textured or Gloss Powder coated Finish Available
- Custom Color-Matching Options Available



**A full line
of add-on
equipment:**

**MORE STRENGTH
PER SQUARE FOOTTM**

Maximize your Rack or Rig performance with many accessory & attachment options.



Selectorized Options



Storage Options



Performance Options

409010

Titan Accessory LANDMINE

Specifications:

WEIGHT: 6 LBS

DIMENSIONS: 3" W x 3" H x 17" L

