

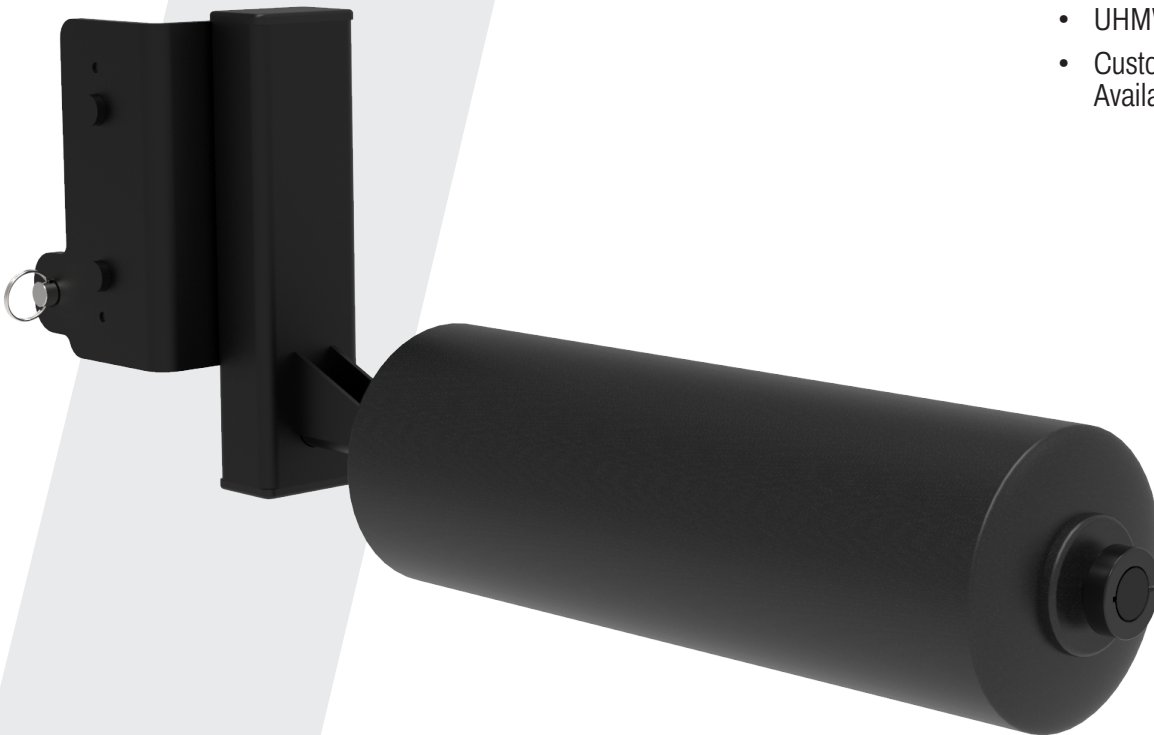


SPLIT SQUAT ROLLER

In combination with Dynamic's 2" adjustments, this split squat attachment can be put at the perfect level to perform split squats. The foam pad provides comfortable support.

Features:

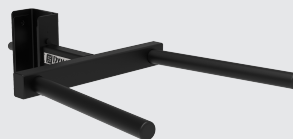
- Quick Release Locking Pin
- 6" Wide 17.5" Long Rotating Pad
- UHMW Wear Guards
- Custom Color-Matching Options Available



**A full line
of add-on
equipment:**

**MORE STRENGTH
PER SQUARE FOOT™**

Maximize your Rack or Rig performance with many accessory & attachment options.



Dip Station



Bolt-on Band Pegs



Band Peg Accessories

709041

Ultra Pro™ Attachment SPLIT SQUAT ROLLER

Specifications:

WEIGHT: 21.06 LBS

DIMENSIONS: 6" W x 8.25" H x 30.92" L

