

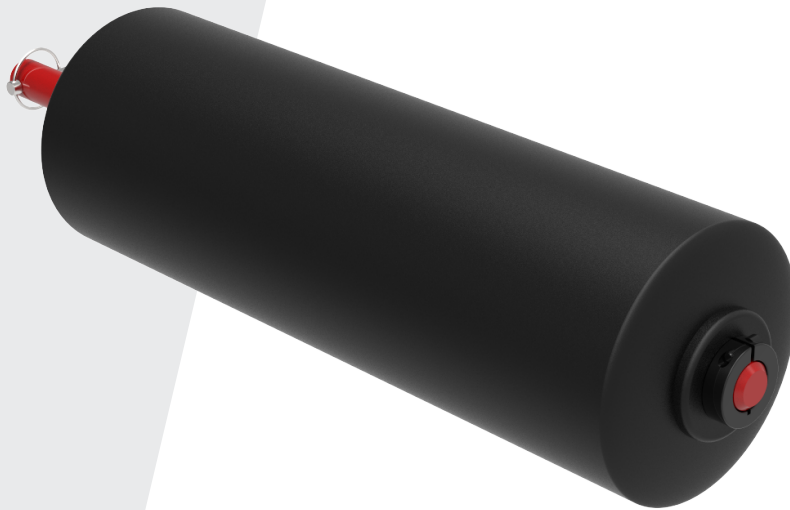


Titan Attachment SPLIT SQUAT ROLLER

Compatible with the Titan Series uprights, this will mount at any height or direction in the Titan upright. Perform Split Squats, Nordic Curls and more. Easily remove roller by unclipping the safety pin, remove from rack and store away when not in use.

Features:

- 6" Round Vinyl Pad, 17.5" Pad Length
- 1" Solid Rod Frame
- Set Screw Collar To Keep Pad In Position
- Quick Release Locking Pin
- Intensive Multi-Stage Pretreatment Process For Long-Lasting Powder-Coat Finish
- Textured Or Gloss Powder Coated Finish Available
- Custom Color-Matching Options Available



PICK YOUR COLORS!
Textured or gloss powder coated finish
COLOR-MATCHING ALSO AVAILABLE.

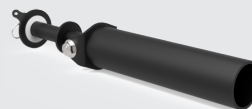
More Rack & Rig Accessories & Attachments

MORE STRENGTH PER SQUARE FOOT™

Maximize your Rack or Rig with many accessory & attachment options.



Storage Options



Landmine



Band Peg Accessories

409261

Titan Attachment

SPLIT SQUAT ROLLER

Specifications:

WEIGHT: 8 LBS

DIMENSIONS: 6" W x 6" H x 24" L

